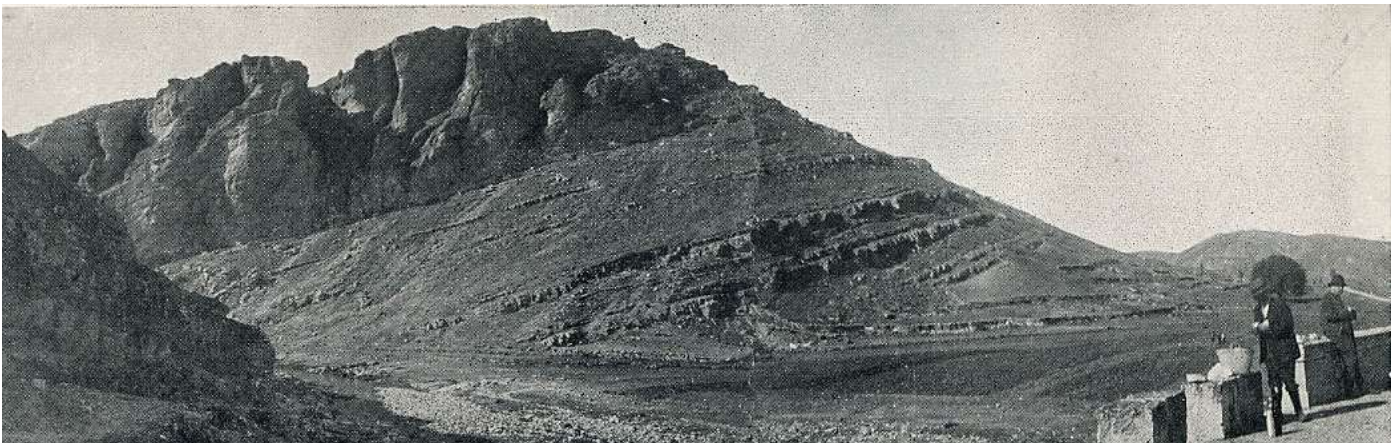




V CONGRESO DEL CRETÁCICO DE ESPAÑA

García-Hidalgo, J.F., Gil-Gil, J., Barroso-Barcenilla, F.,
López Olmedo, F. y Díaz de Neira, J.A. (Editores)



PALYNOLOGICAL INSIGHTS INTO THE LATE CAMPANIAN/EARLY MAASTRICHTIAN FOSSIL SITE OF “LO HUECO” (CUENCA, SPAIN)

Daniel Peyrot^{1,2}, Fernando Barroso-Barcenilla^{1,3} and Oscar Cambra-Moo⁴

¹ Grupo de Investigación Eventos Bióticos Mesozoicos. Facultad de Ciencias Geológicas. Universidad Complutense de Madrid. 28040 Madrid, España - Spain. daniton@gmail.com

² Robertson Ltd. Tyn-y-Coed, Pentywyn Road, Llandudno, LL30 1SA - United Kingdom

³ Grupo de Investigación IBERCRETA. Universidad de Alcalá de Henares. 28871 Alcalá de Henares, España - Spain.

⁴ Laboratorio de Poblaciones del Pasado (LAPP). Departamento de Biología. Facultad de Ciencias. Universidad Autónoma de Madrid. 28049 Madrid, España - Spain.

The palynological assemblages from the late Campanian/early Maastrichtian fossil site of “Lo Hueco”, Central Spain, include a high number and diversity of pollen grains produced by plants related to aquatic habitat that probably constituted the main local (closed) vegetation components of the site, as advanced by Peyrot et al. (2010). The recovered assemblages, particularly rich in angiosperm taxa, were related to swamp or local wetland vegetation. The palynofloras of the site have revealed also different micro-environments in “Lo Hueco”. The main differences among them may be related to water availability in a coastal environment. The overwhelming presence of pollen grains (especially *Emmapollis?* spp.) related to Typhaceae, distinguishes notably the assemblages of “Lo Hueco” from the other Late Cretaceous Western European and North American palynofloras, suggesting that this site was characterized by extremely unusual local palaeoenvironment and depositional setting.

Acknowledgements: The first author publishes with the approval of Jim Fenton, chief stratigrapher of Robertson Ltd, as a contribution of the Biostratigraphy Team of Robertson Ltd - A CGG Company. Research projects PEIII1-0237-7926 of the Junta de Castilla-La Mancha, and CGL2009-12008, CGL2011-25894 and CGL2012-35199 of the Ministerio de Ciencia e Innovación, Spain.

References

Peyrot, D., Barroso-Barcenilla, F., Berreteaga, A., Cambra-Moo, O., 2010. Preliminary palynological data and paleontological interpretations from "Lo Hueco" fossil site (Upper Cretaceous, Cuenca, Spain). *Journal of Vertebrate Paleontology*, Supplement for the Society of Vertebrate Paleontology LXX Meeting, 145–146.



CON LA COLABORACIÓN DE:

